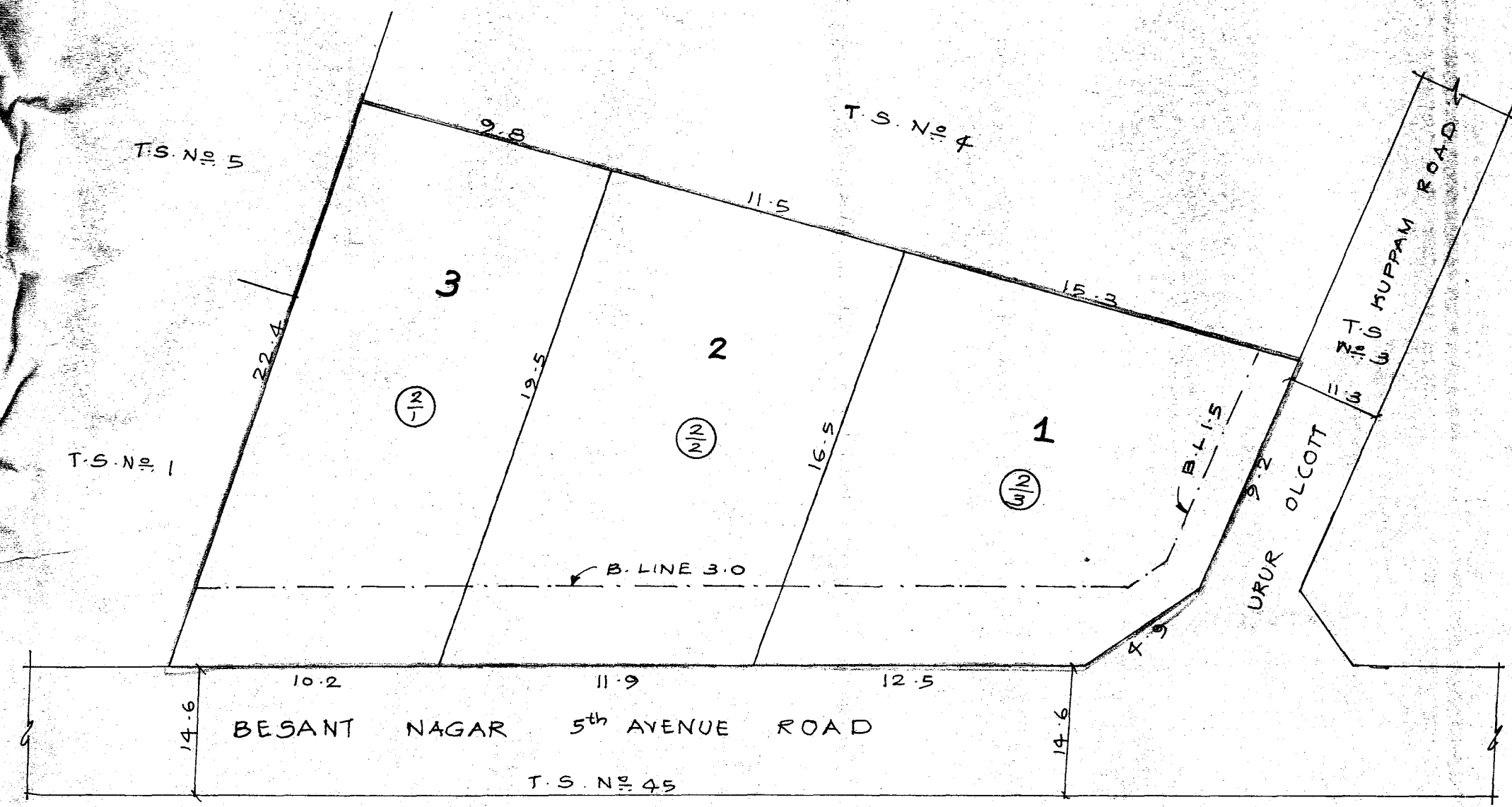


16



TOTAL EXTENT : 612 m²
 NO. OF PLOTS : 3

LEGEND:
 [Symbol] SITE BOUNDARY
 [Symbol] EXISTING ROAD

P.P.D. No. 16
 L.O. No. 2006
 APPROVED
 VIDE LETTER No. : L1/1221/05
 DATED : 18/02/2006

OFFICE COPY

CORPORATION OF CHENNAI

SUB-DIVISION OF HOUSE SITES IN R.S. No. 12 Pt, T.S. No. 2/1, 2 & 2/3, BLOCK No. 16, PLOT No. 8,

BESANT NAGAR 5th AVENUE OF URUR VILLAGE

SCALE 1:200



FOR MEMBER SECRETARY
 CHENNAI METROPOLITAN
 DEVELOPMENT AUTHORITY