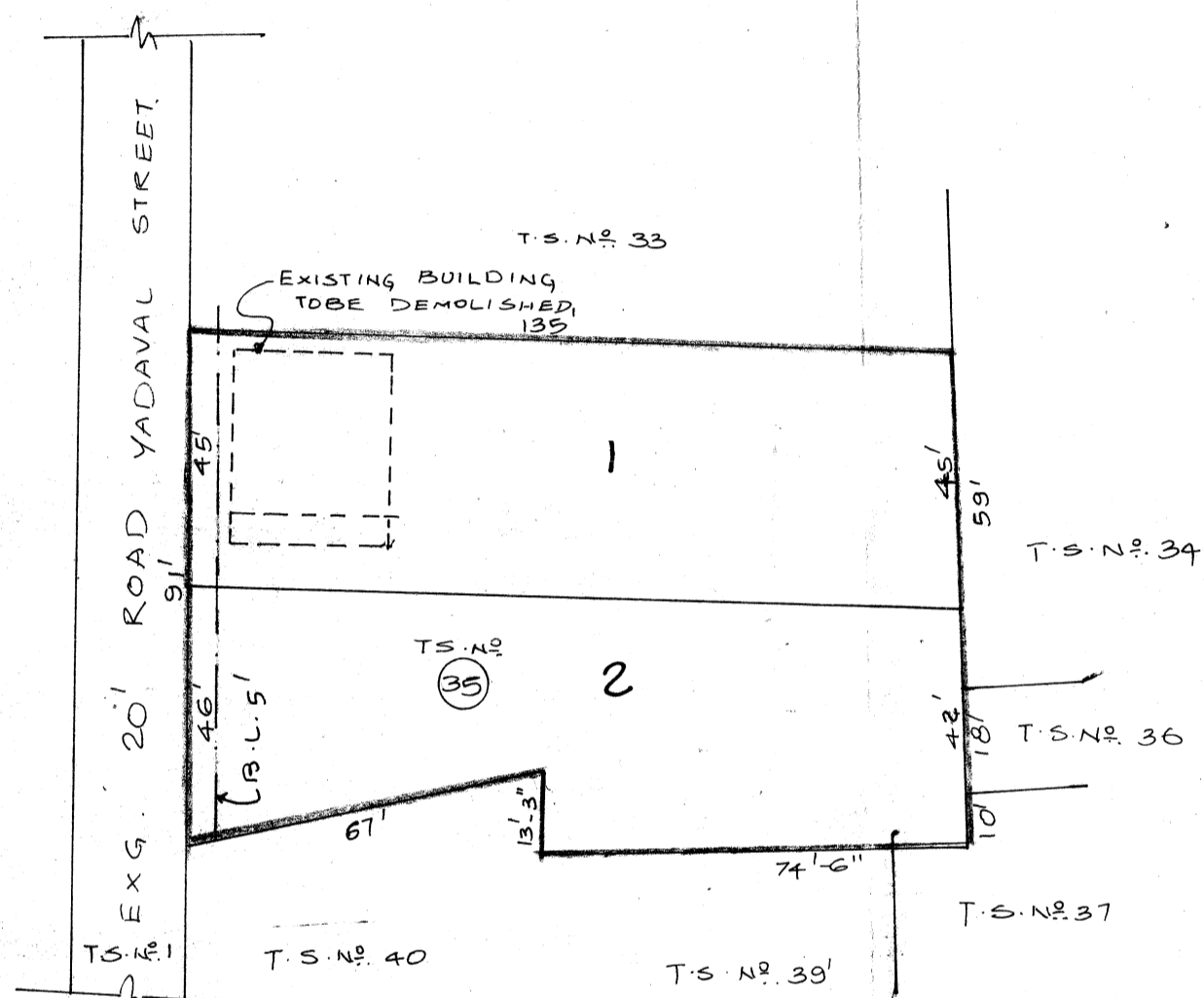


TOTAL EXTENT (0.27ac) : 1100m<sup>2</sup>  
N<sup>o</sup> OF PLOTS : 2



LEGEND

- SITE BOUNDARY
- EXISTING ROADS
- EXISTING BUILDING TO BE DEMOLISHED

P.P.D	N <sup>o</sup> .	56
L.O		2002
<b>APPROVED</b>		
<small>           VICE LETTER N<sup>o</sup>. : LI/12997/2002            DATE D : 26/08/2002         </small>		
<small>           OFFICE COPY            FOR MEMBER SECRETARY            CHENNAI METROPOLITAN            DEVELOPMENT AUTHORITY         </small>		

# ALANDUR MUNICIPALITY

SUB-DIVISION OF HOUSE SITES IN T.S.N<sup>o</sup> 35, OLD S.N<sup>o</sup> 187/30

WARD N<sup>o</sup> G, BLOCK N<sup>o</sup> 17 OF ALANDUR VILLAGE,

SCALE: 33 FEET TO AN INCH