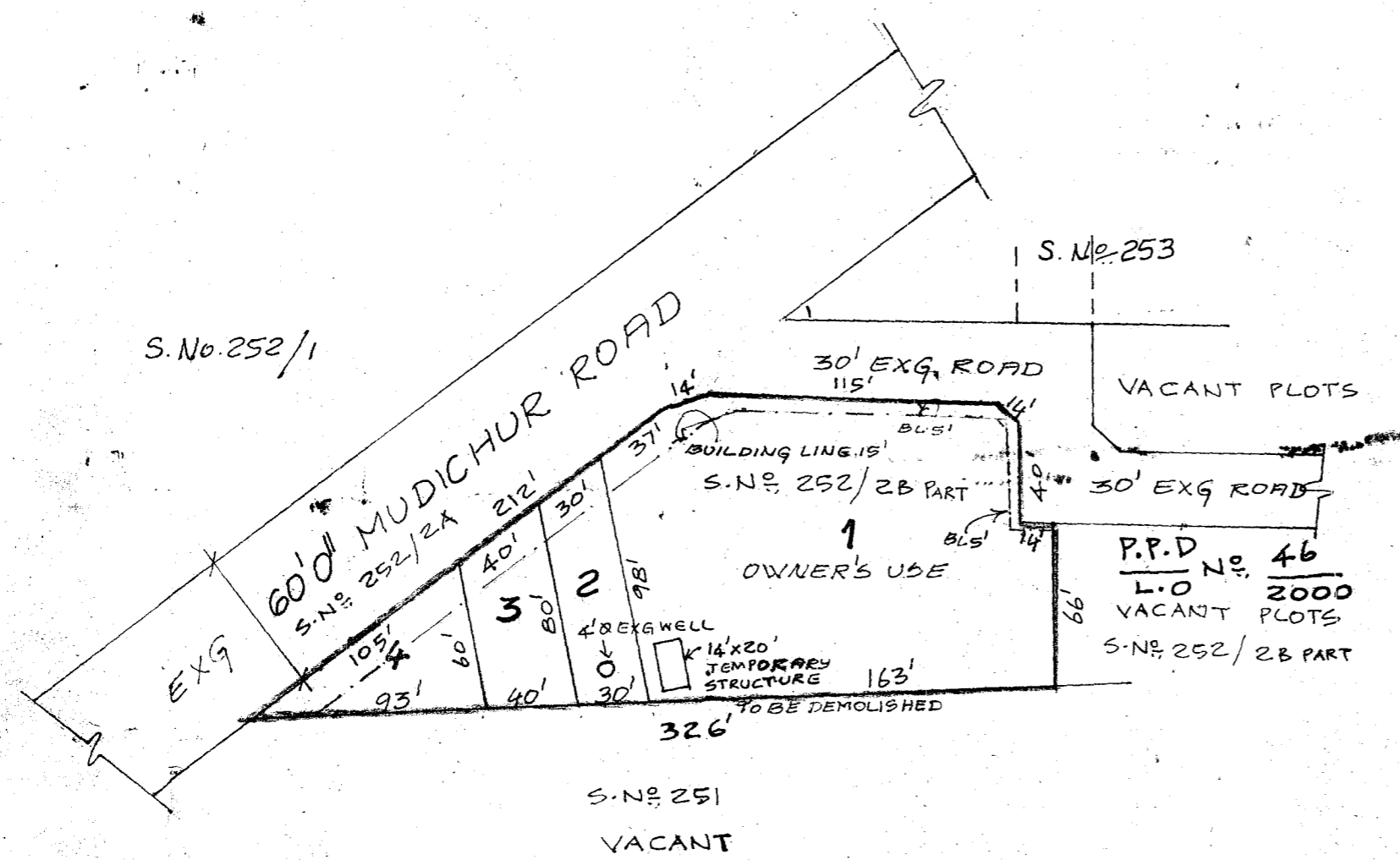


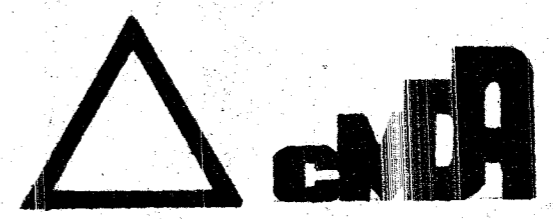
TOTAL EXTENT (0.54 AC) : 2219 M²
NO. OF PLOTS : 4 Nos



NOTE :-
THIS REVISES THE EARLIER APPROVED LAYOUT
P.P.D No. 46
L.O No. 2000
VACANT PLOTS
S.No. 252/2B PART

TRACED BY PAI (K.R.P) AP (R.K) DP (M.S)

P.P.D No. 101
L.O No. 2000
APPROVED
VIDE LETTER No. : L142430/2000
DATED : 19/2/2000
OFFICE COPY
FOR MEMBER SECRETARY
CHENNAI METROPOLITAN
DEVELOPMENT AUTHORITY



PERUNGALATHUR TOWN PANCHAYAT
SUB DIVISION OF HOUSE SITES IN S.No. : 252/2BPT,
OF PERUNGALATHUR VILLAGE
SCALE : 66 FEET TO AN INCH